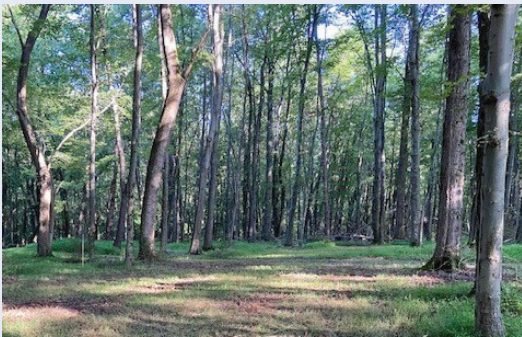




*Garden of Remembrance*  
GAN ZIKARON MEMORIAL PARK

## The Garden of Remembrance Forest Glades

*Unique Family Memorial Grounds for Twenty Loved Ones*



Within our Gan Zikaron Memorial Park, families may purchase private memorial sections to gather their loved ones in a final resting place of privacy and solitude. We call these distinct sections **Forest Glades** which are individually landscaped by families to accommodate up to twenty loved ones.

A limited number of Forest Glades are available throughout the Memorial Park in a variety of tranquil settings including forested woods, tall pine meadows, or landscaped commons denoted by a family signpost at the entrance. Subject to cemetery approval, families design, landscape, hardscape, and sustain their individual Forest Glade sections.



Forest Glades are \$125,000 for up to twenty plots, of which \$50,000 is a charitable contribution to our nonprofit cemetery and \$5,400 is a contribution to our permanent Endowed Care Trust Fund for upkeep and maintenance of the Memorial Park. Forest Glades include twenty required concrete liners in one of two configurations. A limited number of partial Forest Glades are available.

For information about our Forest Glades, please contact our executive director, Glenn Easton, at 301-428-3000 or [GEaston@gardenofremembrance.org](mailto:GEaston@gardenofremembrance.org).